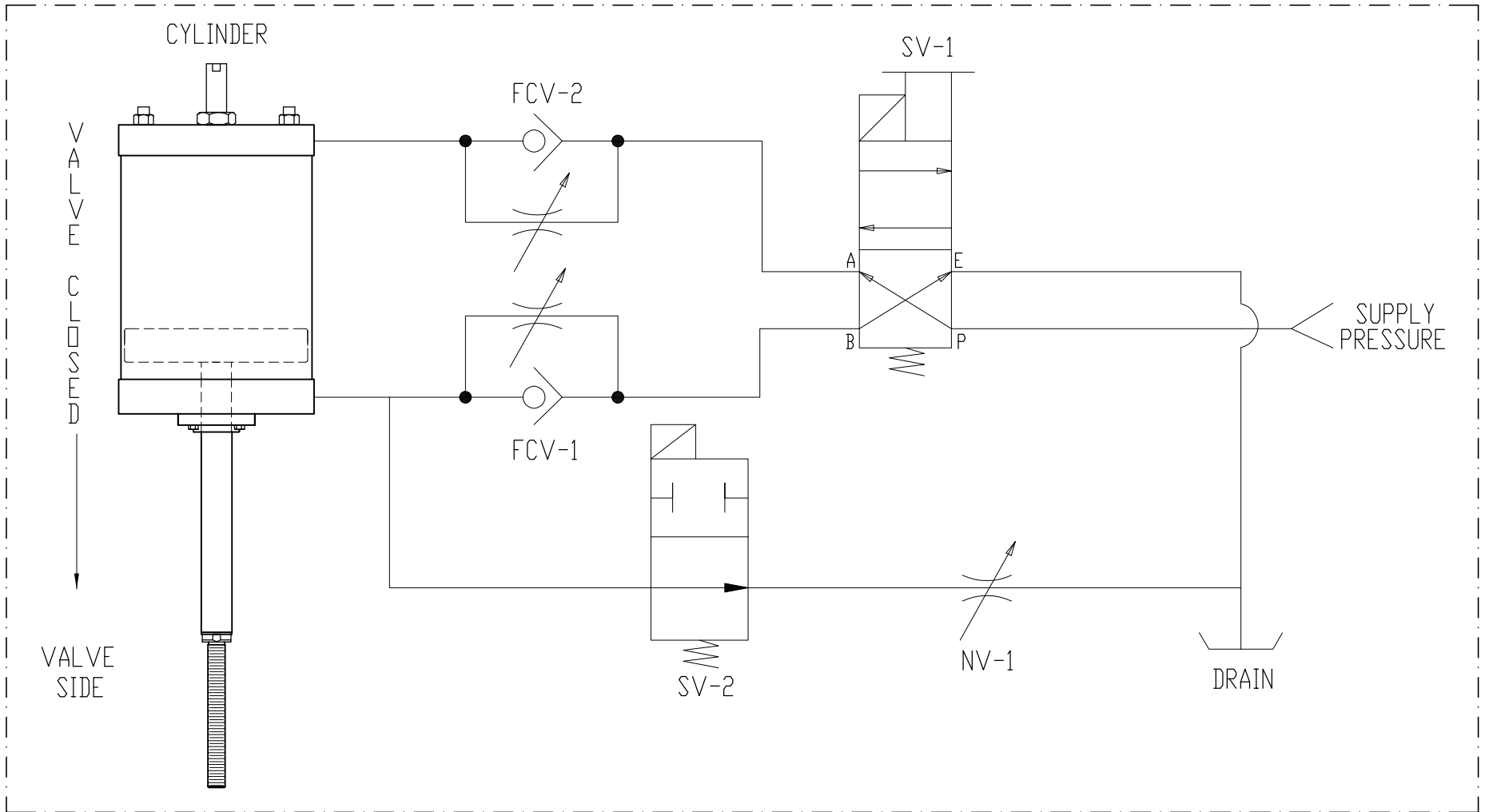


ALL SOLENOID VALVES SHOWN DE-ENERGIZED



SEQUENCE OF OPERATION

AUTOMATIC OPEN

1. ENERGIZE SV-1
2. ENERGIZE SV-2

AUTOMATIC CLOSE

1. DE-ENERGIZE SV-1
2. ENERGIZE SV-2

FAST (EMERGENCY) CLOSE

1. DE-ENERGIZE SV-1
2. DE-ENERGIZE SV-2

LEGEND

- SV-1 ——— 4-WAY DIRECTIONAL VALVE/M.O.
- SV-2 ——— FAST CLOSE VALVE
- FCV-1 ——— CLOSE SPEED CONTROL
- FCV-2 ——— OPEN SPEED CONTROL
- NV-1 ——— FAST CLOSE SPEED CONTROL

CONFIDENTIAL PROPERTY
 OF
AC SERVICE AND REPAIR, INC.
 YORK, PA. 17404

SCHEMATIC, CONTROL
 4W / (1) 2W

REV. 01
 REDRAWN TO SHOW SV-1
 DRAWN CORRECTLY.
 D. ATTIG 05-17-05

REV. 02
 ROTATED CYLINDER AND SV-2
 LOCATION.
 SEQ. OF OPERATION IS THE SAME
 RCR 01-25-10

DFTM	RCR	DWG	900126M	SCALE	N/A
CHKD	RR	DATE		SIZE	4
DATE	1/25/2010	REV		02	